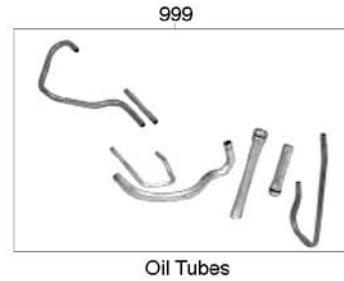
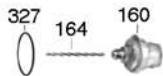


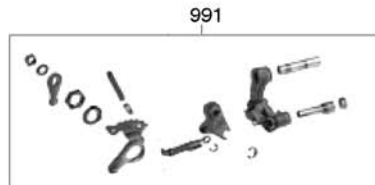
E



F



G



External Linkage

H

Deluxe Kit	008
Compliance Kit	007
Master Kit	006
Less Steel Kit	004
Overhaul Kit	002
Bushing Kit	030
Washer Kit	200
Bearing Kit	201
Technical Manual	400
Pump Part	507
Valve Body Parts	741
Case Parts	761

Note: Not all items are available for all transmissions

FORDOMATIC 3 SPEED IRON CASE (Small, Medium), FMX



Fordomatic 3 Speed		FMX	
Ford Products	51-Up	Ford Passenger/Mercury	68-80
American Motors	56-71	Lincoln & Mark III-IV-V	68-79
Studebaker, Willys, International & Others		Ford Light Trucks	68-Up
		AC 428	68-74

ILL.	DESCRIPTION	QTY.	YEAR	PART NO.	REFERENCE NO.
DELUXE KITS (SUPER KITS) (1)					
008	FMX.....	1	68-81	106008	K600M-R
COMPLIANCE KITS (CALIFORNIA KITS) (1)					
007	FMX.....	1	68-81	106007	CK600M
MASTER OVERHAUL KITS (WITH STEELS) (1)					
006	FMX.....	1	68-81	106006	K600M
006	BW 8-12.....	1	56-74	106006A	K600N
006	Small Case.....	1	51-67	106006B	K600V
006	Medium Case.....	1	55-66	106006C	K600W
006	Medium Case.....	1	67-72	106006CA	K600R
LESS STEEL KITS (1)					
004	FMX.....	1	68-81	106004	K600M-LS
004	BW 8-12.....	1	56-74	106004A	K600N-LS
004	Small Case.....	1	51-67	106004B	K600V-LS
004	Medium Case.....	1	55-66	106004C	K600W-LS
004	Medium Case.....	1	67-72	106004CA	K600R-LS
OVERHAUL KITS (W/ RINGS & SEALS) (1)					
002	FMX.....	1	68-81	106002	K6900M
002	BW 8-12.....	1	56-74	106002A	K6900N
002	Small Case.....	1	51-67	106002B	K6900V
002	Medium Case.....	1	55-72	106002C	K6900W
GASKET & SEAL KITS (W/O RINGS & SEALS) (1)					
000	FMX.....	1	68-81	106000	K6900M-1
000	BW 8-12.....	1	56-74	106000A	K6900N-1
000	Small Case.....	1	51-67	106000B	K6900V-1
000	Medium Case.....	1	55-72	106000C	K6900U-1
<i>(1) - To order Kits with Fiber pan gaskets, add an "F" suffix.</i>					
FILTERS					
010	FMX (Felt).....	1	68-81	106010	6582F
010	FMX (Brass).....	1	68-81	106010A	6582D
010	Small Case & BW8.....	1	50-67	106010B	6582C
010	Medium Case.....	1	55-72	106010C	6582G
BANDS					
Prefix Key: B = Borg Warner, A = OEM (Exc. BW), N = All Other New, R = Relined					
022	Front (Center Lug).....	1	55-66	106022B	6313C
022	Front (Off-Set Lug, Thick Lining).....	1	61-65	106022C	6313E
022	Front (Off-Set Lug, Paper Lining).....	1	61-65	106022E	6313N
022	Front (Off-Set Lug, 1.625" Wide) (Exc. FMX).....	1	61-72	106022D	6313D
022	Front (Flex) (FMX).....	1	68-81	106022	6313X
022	Front (Solid) (FMX).....	1	68-73	106022A	6313R
024	Rear (incl FMX).....	1	56-81	106024	6362A
BUSHINGS					
030	Bushing Kit (FMX).....	1	68-81	106030	K6901
034	Pump Body.....	1	51-67	106034	6010

FORDOMATIC 3 SPEED IRON CASE (Small, Medium), FMX

ILL.	DESCRIPTION	QTY.	YEAR	PART NO.	REFERENCE NO.
BUSHINGS (Cont.)					
034	Pump Body (incl FMX)	1	68-81	36034	36002A
034	Rear Pump.....	1	51-74	106034B	6015
035	Pump Gear.....	1	51-67	106035	N/A
036	Stator (FMX)	1	68-81	106036	N/A
046	Direct Drum (All).....	1	51-81	106046	6003
047	Input Shaft (FMX).....	1	68-81	106047	6008
058	Planet (Inner) (FMX).....	1	68-81	106058	6004
058	Planet (Outer) (FMX).....	1	68-81	106058B	6019
064	Case (All).....	1	51-81	106064	6007
066	Extension Housing (Small Case).....	1	51-67	26066	6014
066	Extension Housing (FMX & Medium Case).....	1	55-81	36066	6023
METAL CLAD SEALS					
070	Front Pump.....	1	51-67	106070B	6550C
070	Front Pump (incl FMX).....	1	68-81	36070	16601B
074	Rear (also fits C-4 w/o Boot).....	1	51-74	44074	8850B
074	Rear (also fits C-6 w/o Boot) (Incl FMX).....	1	51-81	36074	4743C
074	Rear (w/ Bolt on Yoke) (incl FMX) 3.066"OD.....	1	51-81	36074D	6557M
FRICITION PLATES					
106	Direct (Rear) (.095").....	4-5	51-66	106106	6221F
106	Direct (Rear) (.079") (incl FMX).....	4-5	67-81	106106A	6221G
108	Forward (Front) (.061").....	4-5	51-81	106108A	6204M
108	Forward (Front) (.073").....	4-5	51-81	106108C	6204N
108	Forward (Front) (.088").....	4-5	51-81	106108B	6204P
STEEL PLATES					
126	Direct (Rear) (.068") (Flat).....	4-5	51-81	76128	6205
126	Direct (Rear) (.067") (Dished).....	4-6	51-81	106128	6222
126	Direct (Rear) (.092") (Flat).....	1	51-81	106128A	6222B
128	Forward (Front) (Flat).....	3-4	51-81	76128	6205
MISCELLANEOUS COMPONENTS					
160	Modulator, Blue Stripe (Single Line).....	1	51-81	206160	16525D
160	Modulator, Green Stripe (Single Line).....	1	51-81	106160	16525G
160	Modulator, Orange Stripe (Dual Line) (302 Engine).....	1	51-81	106160C	N/A
160	Modulator, Red Stripe (Dual Line).....	1	51-81	106160A	N/A
160	Modulator, Yellow Stripe (Single Line).....	1	51-81	106160D	N/A
162	Hose, Modulator (Elbow).....	1	51-81	44162	13566
165	Shift Kit®, FMX 1967-72.....	1	67-72	T106165	K6253C
165	Shift Kit®, FMX 1973-81.....	1	73-81	T106165A	K6253D
165	Reprogramming Kit™, FMX Competition Stick Shift.....	1	73-81	T106173	FMX-3
300	Gasket, Bottom Pan (Small Case) (Cork).....	1	51-74	106300	3565X
300	Gasket, Bottom Pan (Small Case) (Fiber).....	1	51-74	106300F	3565F
300	Gasket, Bottom Pan (Medium Case) (Cork).....	1	55-72	106300C	3610LX
300	Gasket, Bottom Pan (Medium Case) (Fiber).....	1	55-72	106300CF	3610F
300	Gasket, Bottom Pan (FMX) (Cork).....	1	68-81	106300	3565X
300	Gasket, Bottom Pan (FMX) (Fiber).....	1	68-81	106300F	3565F
311	O-Ring, Front Pump (FMX).....	1	68-81	106311	3666
500	Pump (FMX).....	1	68-81	106500	6551L
530	Pump Gears (FMX).....	1	68-81	36530	K36201
554	Forward (Front Clutch) (FMX).....	1	68-81	106554	6211R
654	Sprag , Low Roller Clutch (Rear) (FMX).....	1	68-81	34654	34402A
681	Spring, Governor Return Spring (FMX).....	1	68-81	106681A-3	6242CS
681	Spring, Governor Return Spring (Heavy Duty) (FMX).....	1	68-81	106681B-3	N/A
974	Spring, Front Clutch Spring (FMX).....	1	68-81	106974	6208C

3 SPD, FMX